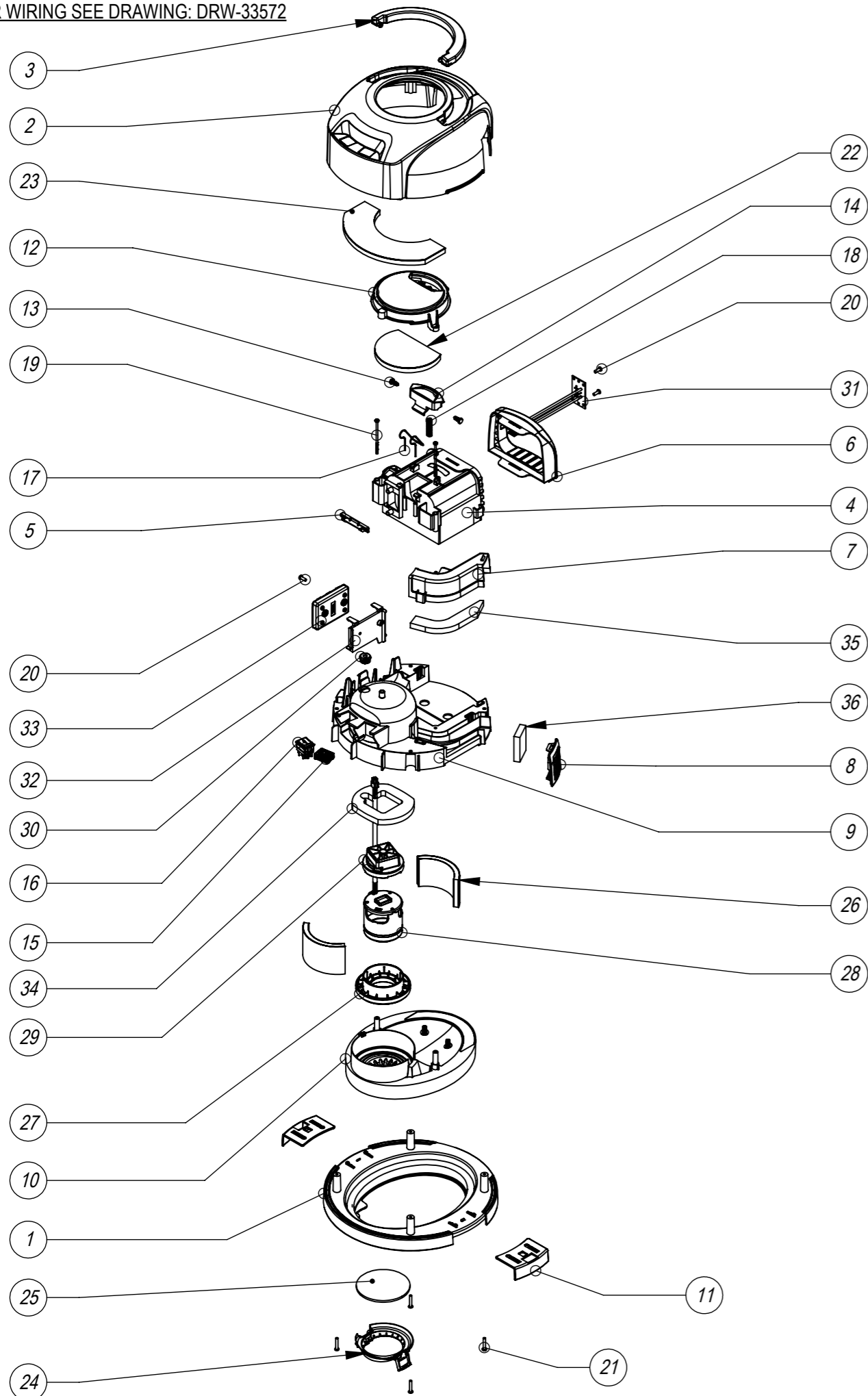


Numatic International Spare Parts

Model No: HEAD STYLE 19 - 12 INCH CORDLESS - BRUSHLESS MOTOR - 2-SPEED - EXPLODED ASSEMBLY

912109
DRAWING: DRW-33129 ISS:A05
07/04/2021

NB: FOR WIRING SEE DRAWING: DRW-33572



Numatic International Spare Parts

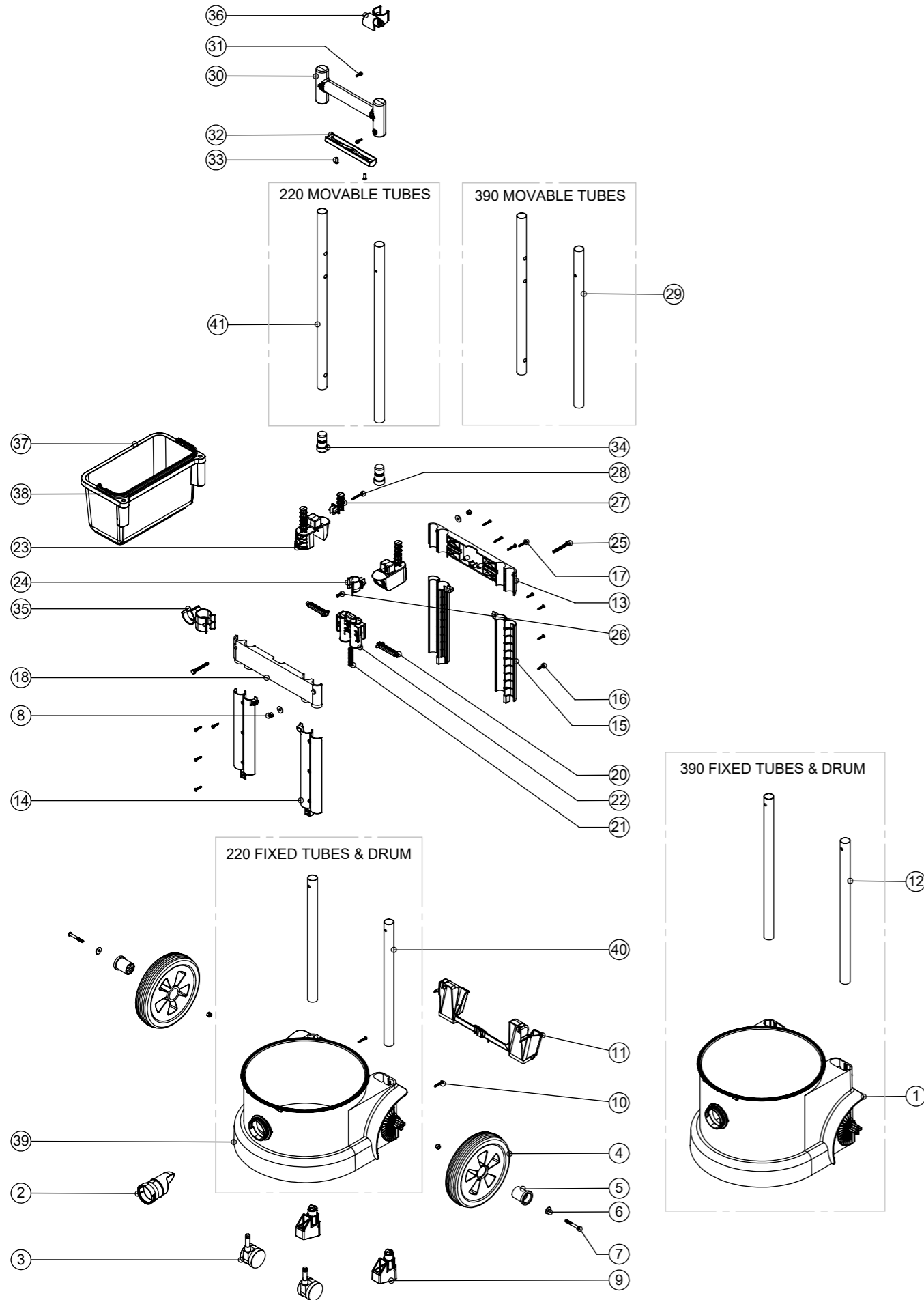
Model No: HEAD STYLE 19 - 12 INCH CORDLESS - BRUSHLESS MOTOR - 2-SPEED - EXPLODED ASSEMBLY

ITEM NO.	Item_No	DESCRIPTION	QTY.	COMMENTS
1	326066	HARD EDGE BOTTOM MOTOR HOUSING PROCESSED FOR NBV BATTERY VAC	1	
2	326092	PVR COVER + HANDLE PROCESSED FOR NBV BATTERY VAC	1	
3	227120	HANDLE - HVR/HET/NRV	1	
4	912066	BATTERY POD	1	
5	237641	BATTERY RELEASE SPRING RETAINER	1	
6	237602	NBV BATTERY POD FASCIA (BLACK)	1	
7	912090	NBV EXHAUST DUCT	1	
8	237640	EXHAUST AIR DUCT FASCIA	1	
9	912067	NBV MOTOR HOUSING	1	
10	237599	NBV MOTOR ADAPTOR	1	
11	237115	NRV HARD EDGE TOGGLE	2	
12	237603	NBV REELER CAP	1	
13	237597	BATTERY RELEASE TOGGLE - HINGE PIN	2	
14	237604	NBV BATTERY RELEASE CATCH (RED)	1	
15	903030	LED BATTERY LIFE INDICATOR WITH PCB	1	
16	903963	SWITCH.DPDT.RKR.HV	1	
17	216655	BATTERY RELEASE SPRING	1	
18	216465	11MM COIL SPRING	1	
19	291049	No8 X 2.95 TX-PN-PLAST SCREW (ZINC PLATED)	2	
20	291152	NO8.1/2 INCH LG.T20.SCREW.Z/PL.PLASTITE	3	
21	291082	#8 SCREW 1"L T20 PAN HEAD P/L THREAD FORMING	4	
22	303034	BATTERY RELEASE ACOUSTIC BARRIER	1	LATER MODEL 3/5/21
23	203035	BATTERY VAC COVER ACCOUSTIC BARRIER	1	LATER MODEL 3/5/21
24	203036	FILTER LOCKING CAP	1	LATER MODEL 3/5/21
25	209086	NBV PRE-MOTOR FILTER	1	LATER MODEL 3/5/21
26	203033	NBV MOTOR ACCOUSTIC BARRIER INSTALLED POSITION	2	LATER MODEL 3/5/21
27	911904	NBV MOTOR GASKET	1	
28	911895	SIP CINDERSON 74MM 36V MOTOR (350W/200W)	1	
29	911906	NBV MOTOR TOP MOUNT	1	
30	911088	WIRE GROMMET	1	
31	912057	NX CONNECTING PCB	1	
32	912056	NBV PCB MOUNT	1	
33	910251	CORDLESS RUCKSACK PCB ASSEMBLY	1	
34	912058	MOTOR POD TOP FOAM	1	
35	911836	NBV EXHAUST FOAM	1	
36	912059	NBV EXHAUST FELT	1	LATER MODEL 3/5/21

Numatic International Spare Parts

Model No: DRUM STYLE 4 - 220/390 TROLLEY DRUM EXPLODED

NA
DRAWING: DRW-18717 ISS:A03
23/12/2014



Numatic International Spare Parts

Model No: DRUM STYLE 4 - 220/390 TROLLEY DRUM EXPLODED

ITEM:	PART No:	Description	QTY.	COMMENTS
1	-	390 DRUM (TROLLEY VAC)	1	CONTACT NUMATIC FOR DETAILS
2	237119	FRONT FIT BAG CONNECTOR	1	
3	204111	50MM TWIN WHEEL CASTOR WITH PU TYRE	2	
4	204104	8 INCH WHEEL	2	
5	-	HUB CAP	2	
6	219008	M6 FORM G WASHER	4	
7	219881	M6 X 45MM SOCKET BUTTON HEAD SCREW	2	
8	219088	M6 NYLON INSERT NUT	4	
9	237319	SYMETRIC HUB SUPPORT	2	
10	219369	No8 X 1 INCH LONG POZI PAN STAINLESS STEEL PLASTITE SCREW	2	
11	237699	FLOOR TOOL DOCK	1	
12	391321	390 FIXED TUBE (TROLLEY VAC)	2	
13	237152	CROSS BAR REAR (TROLLEY VAC)	1	
14	237150	HANDLE UPRIGHT FAKE SCREW (TROLLEY VAC)	2	
15	237149	HANDLE UPRIGHT HOLES (TROLLEY VAC)	2	
16	291005	No6 X 5/8 INCH LONG POZI PAN PLASTITE SCREW JAPANED	8	
17	291006	No6 X 1 INCH LONG POZI PAN PLASTITE SCREW JAPANED	4	
18	237151	CROSS BAR FRONT (TROLLEY VAC)	1	
19	237148	PLUNGER BUTTON (TROLLEY VAC)	1	
20	237146	PLUNGER PIN (TROLLEY VAC)	2	
21	291009	SPRING (TROLLEY VAC)	1	
22	237145	SLIDER SLEEVE (TROLLEY VAC)	2	
23	237156	BUCKET MOUNT (TROLLEY VAC)	2	
24	237155	BUCKET CLIP (TROLLEY VAC)	1	
25	219315	M6 X 50MM LONG BOLT	2	
26	219107	NO6.5/8 INCH LG.POZI-PAN.SCREW.Z/PL.PLASTITE	1	
27	237166	BUCKET CLIP IN PEG (TROLLEY VAC)	1	
28	219848	NO6 X 1 3/8 INCH LONG POZI PAN SCREW	1	
29	N/A	390 MOVING TUBE (TROLLEY VAC)	-	
30	237157	HANDLE BODY (TROLLEY VAC)	1	
31	219472	M4 X 16MM LONG POZI PAN SEMS SCREW	2	
32	237158	HANDLE CAP (TROLLEY VAC)	1	
33	291152	NO8.1/2 INCH LG.T20.SCREW.Z/PL.PLASTITE	2	
34	237147	SLIDER END STOP (TROLLEY VAC)	2	
35	237345	PVT HOSE CLIP	1	
36	237476	PVT WAND CLIP	1	
37	237144	5L RED SWING BUCKET (TROLLEY VAC)	1	
38	237153	CADDY HANDLE (TROLLEY VAC)	1	
39	-	220 DRUM (TROLLEY VAC)	1	CONTACT NUMATIC FOR DETAILS
40	391361	220 FIXED TUBE (TROLLEY VAC)	2	
41	391360	220 MOVING TUBE (TROLLEY VAC)	2	